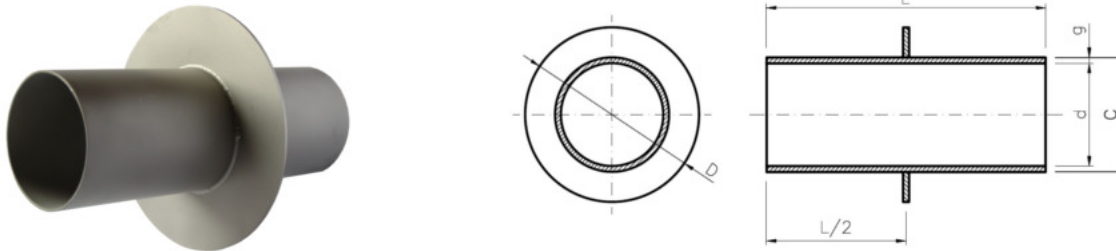


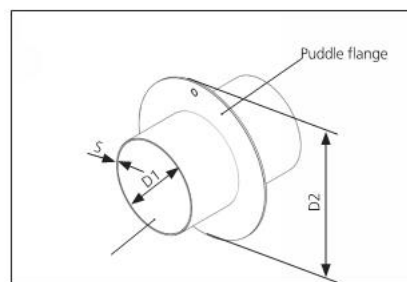
## Wall Sleeves for pipes with puddle flanges



<http://www.westatlantictech.com/pages2/wall-sleeves-flange-multi-fiber-stainless.php#standard>

Wall Sleeves WA-WS-Standard units have a puddle flanges mounted on the sleeve. They cast in concrete walls and form part of a waterproof pipe through wall watertight passage into buildings.

The wall sleeve is mounted flush within the shuttering forms.



Standard wall sleeves are 12 inch long (300 mm).

The sleeves may be supplied in any length require above or below 12 inch (300 mm) length.

Wall sleeves are available for all American and International pipe sizes.

Experienced staff can provide solution guidance and recommendations

***E-mail Contact Westatlantic Tech Corp***

***Tel 902 455 4455***