

EXTERNAL WALL PIPE SEALS



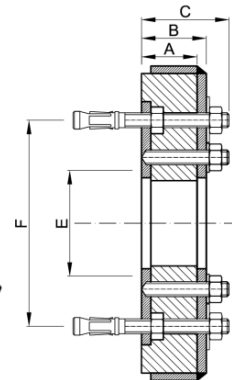
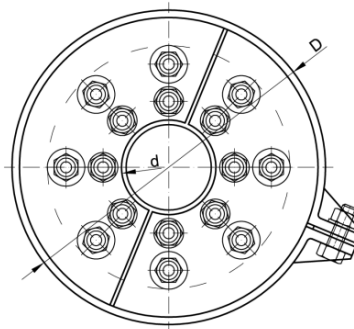
Westatlantic GP-B sealing is part of the GP- seal system of pipe seals.

Seals are designed for pressure sealing of pipes, ducts, conduit and cables, passing through building foundation walls, concrete tanks and hydraulic structures.

The seal consists of an elastomeric ring seal element, two pressure plates and a outer band securing.

Seals are suitable for exterior wall sealing for pipe penetrations. It is used when there is no possibility of placing a seal between the pipe and the opening, the opening being too small, not axial, not oval.

May be used on, cast iron, PVC, PE pipes, power cables, telecommunication cables.



Diameter range: Up to DN500 (20")
Max working pressure: 0.25 MPa (36 psi)
Compression Plates: Stainless steel
Sealing material: EPDM, NBR, or SILICONE

Seals may be use for new pipe installations or as a split version for existing pipes.
Prevents the migration of liquids, gases and smoke, noise suppression
May be used where seals already exist but are leaking.
Low profile about 2.50 inch thick, for limited access applications.